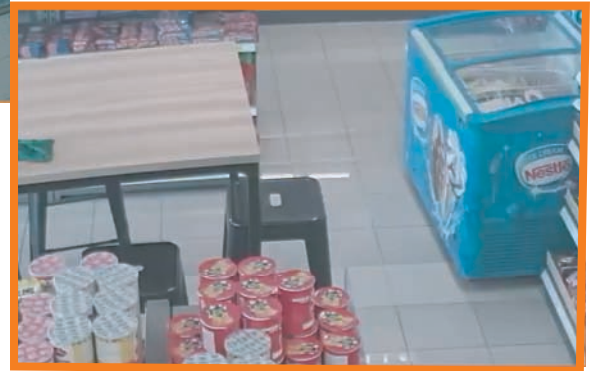


LCIR-HF1080D

2.5inch Vandal Dome camera, AHD/TVI/CVI/ CVBS , 3MP IR Corrected Lens



model: **LCIR-HF1080D**



*deliver sharp picture at
20 feet 92° field of view digital zoom*

System Overview

LCIR-HF1080D adapts HD-AHD/CVI/TVI+CVBS 4-in-1 technology to maintain the simplicity feature of traditional analogue surveillance system, cost-saving seamlessly upgrade the traditional analogue system without replacing existing coaxial cabling. The plug and play approach attains full HD video surveillance without hassle of configuring a network architecture.

LCIR-HF1080D has a SONY Exmor 2 Megapixel CMOS image sensor that produces amazing 1080P color video in real time 30fps without any choppiness. The 3.6mm IR corrected lens provides 92° angular view of scene in daytime or darkness without focus shifted. There are 12pcs of high intensity IR LEDs that help the camera to see in darkness up to 15m.

LCIR-HF1080D is an innovation of indoor camera with external navigation knobs that can adjust camera setup besides Video Recording systems (DVR) can do.

Its digital ability to zoom in helps to verify detected security events which contradicts low resolution camera when video is magnified, it gets pixelated and is of no use in discerning detail like faces or objects at a distance.

It is compact in size but discreet design that is perfect for remote and discreet monitoring of indoor areas such as lift car, stores, banks, hotels, office lobbies, restaurants and warehouses. This vandal-resistant model is capable of withstanding the equivalent of 10 lbs of force and can be used in those areas subject to vandalism. It is IP66 rated to protect against the ingress of dust and high pressure water jets from any direction. With a temperature range of -30°C to +60°C, the camera is designed for extreme temperature environments.

For the price, users get a lot of features not offered in any other camera. For users who are looking for HD video surveillance applications, this is certainly a model that should be on your list of products to consider.

Technical specifications

Model No.	LCIR-HF1080D		
Image Sensor	1/2.7" Sony CMOS	WDR	Off
Signal System	PAL/NTSC	Menu Language	English/Spanish/French/Traditional Chinese/ Russian/Italian/Greek/Korean/Portuguese/Polish
Effective Pixel	1920(H) × 1080 (V), 2.0MP	Video Output	Up: AHD; Down: CVI; Left: TVI; Right: CVBS (Press the navigation button for 5 second to switch)
Min. Illumination	0.01Lux @ (F1.2, AGC ON), 0 Lux with IR	Lens type	3.6mm IR corrected 3MP Lens
Day & Night	IR/Auto/Color/B/W	Angle of View	92°
Frame Rate	1080P@25fps / 1080P@30fps	IR Light	Φ 5×12pcs IR LEDs
AES	AUTO	IR Range	15m
SYNC	Internal	Operating Conditions	-20°C ~ 50°C, Humidity <85%
Brightness	1-9 adjustable	Power Supply-Current	DC 12V(±20%) – 70MA
WB	ATW	Dimension(L×H)	95×63mm
Contrast	1-13 adjustable	Weight	250g
Sharpness	1-6 adjustable		
Color Gain	1-14 adjustable		
DNR	1-6 adjustable		

specifications are subject to change without prior notice.