

960H Face Detection DVR

LDVR401F

LDVR401F is intelligent 960H digital video recorder with face detection algorithm. It can analyse video signal and identify faces in images but ignore other details. It detects, keeps track of faces and saves the face images of the best quality of the whole tracking process. It enables alarm triggering, email, push alarm notifications, etc.

LDVR401F also supports multiplex operation including record, live view, playback, backup, control, remote access. Besides, HDD error detection it equipped with easy-to-implement functions locally or via internet, making it user friendly surveillance solution.



- **Face Detect Function**

LDVR401F DVR is featured with face detection function to detect facial features and ignores anything else, such as buildings, trees and bodies. With 1 video channel to perform face detect function it is taking 3 people face at the same time, mix. pixel : 20*20.

- **960H Wide D1 (WD1) Resolution**

It provides WD1 resolution when recording or playback so that users have wide choices of image quality for recording purpose and real-time live display available for all cameras.

- **P2P Function**

LDVR401F DVR can also use Device ID and password to login, realize remote monitoring, playback and control like IE Web login. It needs not any network, IP setting thus easy for end user to use in network environment.

- **Web 2.0 function**

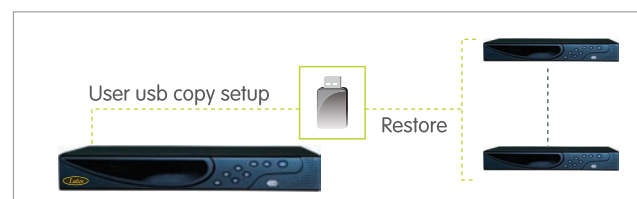
LDVR401F supports multi browsers like : Chrome, Firefox, Safari, etc to realize remote display, playback and PTZ control.

- **HDD error detection**

With LDVR401F, HDD condition is inspected every time when powering on the DVR. Thus, if any error is detected, users can fix the problem immediately.

- **DVR setup data Backup/Restore**

It helps when every DVR need to have same settings. Users simply export the settings from any organized DVR and save it into the USB. Using the setting in USB to set up each and other LDVR401F in the system is simple



- **E-map**

LDV R401F has video management software that allows users a visual overview of the locations and distributions of the installed cameras and alarm input devices. It allows users to view live video of the cameras on the map, pop-up images on screen and get notification message from the map instantly when alarm is triggered. The info of recent alarms and events can be displayed.

960H Face Detection DVR



Specifications

Model No.		LDVR401F
System	O.S	Embedded Linux
Special function	Face Detection	1ch Face detection function
		Tracking 3 people face sat the same time
		Mix. Pixel : 20*20
Video	Input	4-CH BNC
	Standard	PAL (625line, 50f/s) NTSC (525line, 60f/s)
	Output	1 HDMI, 1.3a support 1920x1080 Resolution 1 VGA, 1920x1080, 1440x900, 1280x1024, 1024x768, 800x600 Resolution
Audio	Input / Output	2 ch. BNC / 1 BNC (3.3Vp-p, 4.7k ohms)
Record	Compression	H.264 Video, G.711 Audio
	Image Encoding	Adjustable encoding quality, variable code stream/fixed code stream
	Resolution	4ch D1 realtime
	960H	4ch 960H recording; 4ch Playback
	Mode	Manual, Auto, Motion Detection, Stop
	Pre-record	0 ~ 30 seconds
Display	Image Encoding	Adjustable encoding quality, variable code stream/fixed code stream
		Resolution
	Resolution	PAL, 960H(960x576), D1 (704x576); NTSC, 960H(960x480), D1 (720x480) 960H/D1/CIF/QCIF optional
Playback	Privacy Masking	Four zones for privacy masking for each channel
	Frame rate(FPS) & Resolution	PAL : 25fps@WD1/D1, 50fps@Half D1, 100fps@CIF NTSC: 30fps@WD1/D1, 60fps@Half D1, 120fps@CIF
	Search	Normal, Alarm, Motion
Storage	SATA HDD	Up to 2 sets of SATA HDD's with Storage => 6TB HDD
	USB Interface	2 USB 2.0 ports
Video Detection & Alarm	Triggered Events	Recording, PTZ, Tour, Email
	Motion Detection	396 (22x18) detection zone, variable sensitivity levels
	Input / Output	4ch / 1ch NO, NC
Network	Ethernet	1 RJ-45 port (10M/100M)
	Network Protocol	TCP/IP, UDP, HTTP, RTP/RTSP
	Network Functions	DHCP, PPPoE, DDNS, SMTP, SNTP, FTP, UPnP, P2P, 3G
	Remote Operation	Monitoring, PTZ control playback, system setting, file download, log information
	Smart Phone	iPhone, iPad, Android, Blackberry, Windows Mobile
Control	RS-485	For PTZ / Keyboard / Camera
	RS-232	No
Setup	Local	I/R remote, USB mouse, RS-485 keyboard
	Remote	I.E / CMS
	Multi-lingual	Yes
Power	Power Supply	+12VDC / 4A
	Consumption	10W (without HDD)
Dimension (WxDxH) / Weight		360*260*48mm / 1.2Kg (without HDD)
Operating Temperature		-10°C ~ + 55°C / 10% ~ 90% RH
Installation		Desk type
Alternate Views  Front view  Rear view		System Configuration 

Specificaion are subject to change without prior notice.