

LDVR-SD series DVR is a standalone HD digital video recorder that provides integrated solutions with HD-SDI and CVBS, as well as that smart Central Management Software to manage DVRs with ease, and monitor DVR with 3G mobile phone or PDA phone. Equipped with easy-to-implement functions such as event alarm, email alarm notification, firmware update via internet, HDD error detection, and FTP file storage, make LDVR-SD user friendly and easy for integration surveillance solution.



- **Superior Compression Technologies**

H.264 High Profile Video Compression/decompression with configurable quality. LDVR-SD features advanced H.264 video compression for 7 times higher detail (1920x1080 vs 640x480) than the original camera system. That high compression ratio of H.264 consumes less HDD space than MPEG-4 video.

- **Superior video resolution**

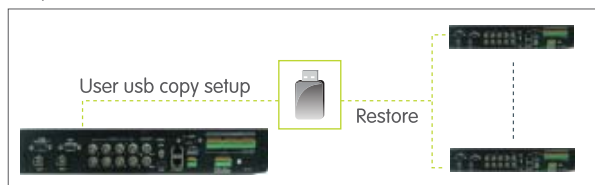
LDVR-SD delivers the full image resolution at the specified frame rate in real time without any missing frames causing judder.

- **Real-time High Definition Resolution Recording over COAX**

LDVR SD delivers and record full HD image using traditional coaxial cable.

- **DVR setup data Backup/Restore**

Every DVR can have same settings. To do so, export the settings from any organized DVR and save it into the USB. Using the setting to set up every other DVRs in the System.



- **N streaming optimization**

It allows user to record highest quality video in local hard drive, while simultaneously streaming a lower-resolution image via the internet. This would improve speed and reduce bandwidth when accessing the system using mobile devices.

- **New standard for security**

Serial digital interface (SDI) is a family of digital video interfaces used for broadcast-grade video. High-definition serial digital interface (HD SDI) is a related standard, provides a nominal data rate of 1.485 Gbit/s to transmission of uncompressed, unencrypted digital video signals

- **Not against IP, another solution for existing system**

Since the coaxial cables originally used for the analog system has significant unused data spectrum available, it is a simple matter to just replace the camera and the recorder to obtain Full HD resolution.

- **HDD error detection**

HDD condition is diagnosed every time when powering on the DVRs. If any error is detected, users can fix the problem immediately.



- **Smart Detection Zone Search**

It allows user to specify a certain region of the camera video. If any event that recorded is found with motion in this region, the event will be listed. This helps locate wanted events very efficiently.

CMS Features

• Hyper Interactive E-Map

Hyper E-map functions, allowing users to customize E-map and E-map objects to fulfill customized needs. It provides multi-task managerial functions through unlimited E-map layers.

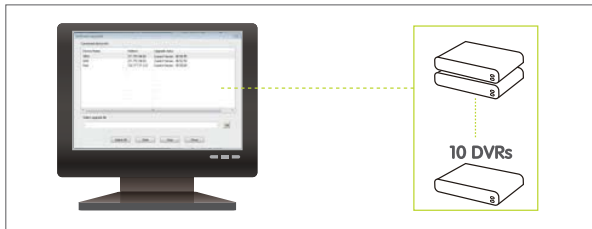
• CMS 64 Division

Each separate division can choose the different camera from different DVR. For example, user can place the Channel 09 view from DVR at different branch on Division01, it is changeable by User. It is flexible.



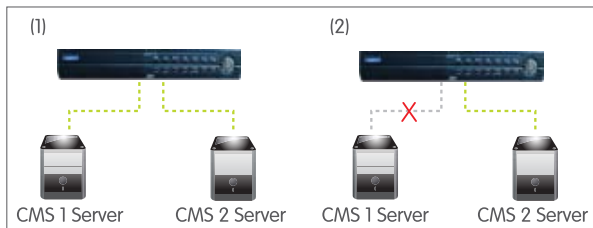
• Firmware update

Firmware update can be done easily via the Internet. With the CMS software, users can update 10 DVRs at the one time.



• Server Backup

- (1) User can set up 2 CMS Servers.
- (2) When server is down, the DVR can auto-backup its data to server2 to avoid the data losing.

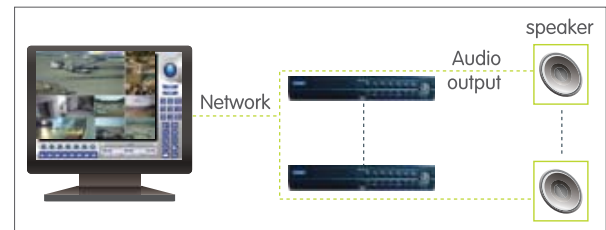


• DDNS Support

LDVR-SD support a number of popular free DNS services, and also has own DNS service for our user.

• Voice Broadcasting

With broadcasting function, the CMS can broadcast the Voice to every DVRs in the system.

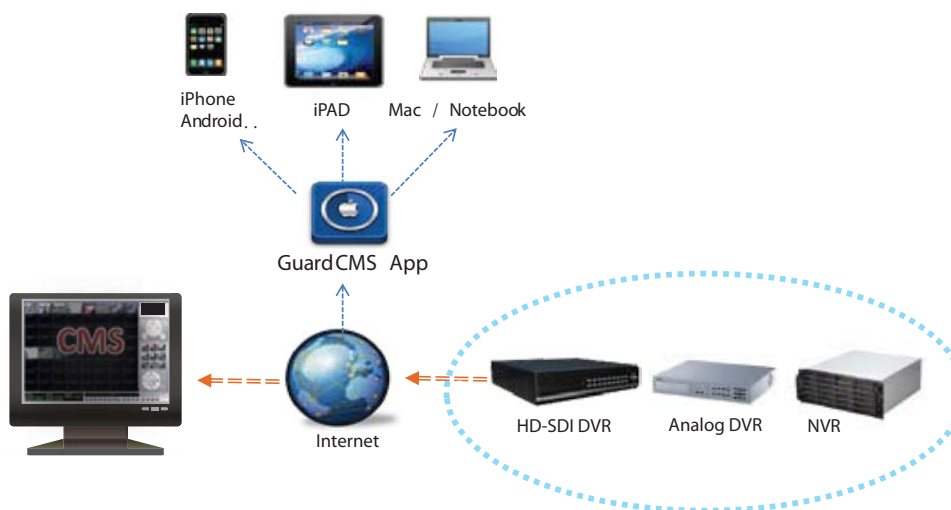
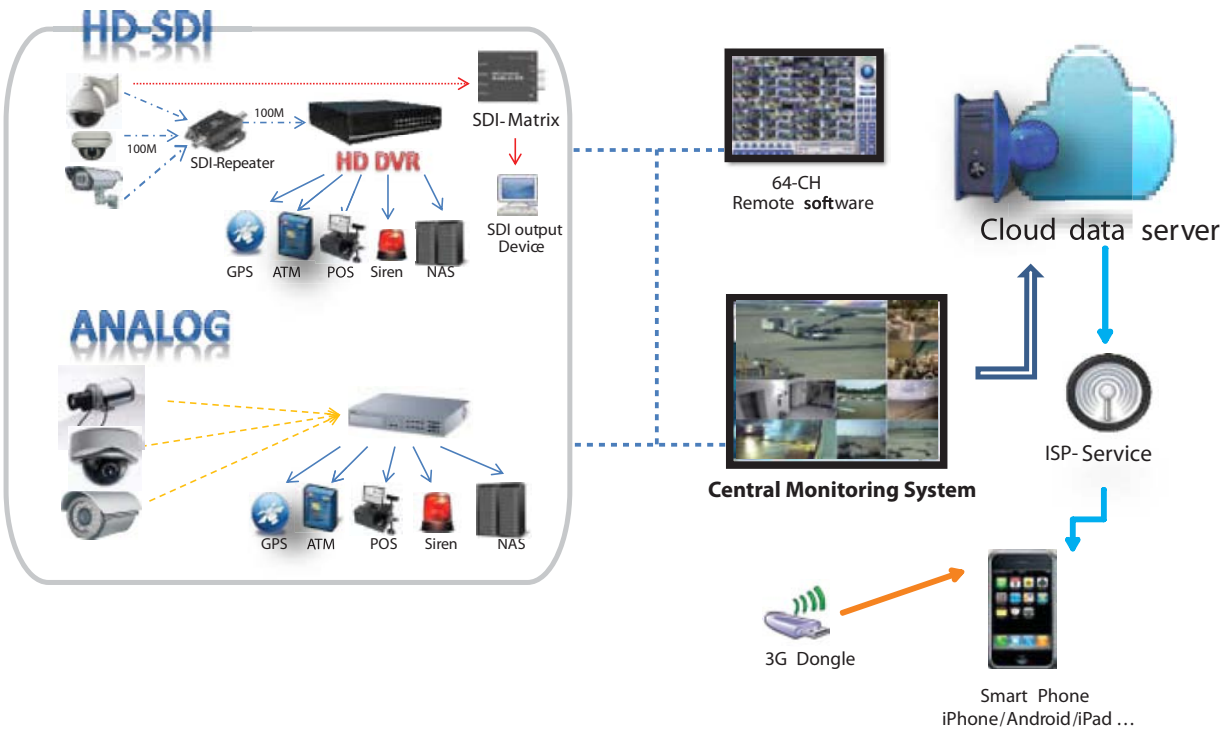


• Remote Surveillance

To provide different approaches for user to remote access their DVR. Use their computer, iPhone, iPad, Android and Smartphone Apps to view camera in anywhere.

Device	Live-View	Playback	Set-up	Dual Stream	
PC	V	V	V	V	View Example
iPhone & iPad	V	V		V	
Android	V	V		V	
Smartphone	V				

System Configurations



Distributed by:

Specifications

Model No.		LDVR-SD412
System	O.S	Embedded Linux 3.0
Video	Input	4HD + 12 Analog
	Main monitor	1*VGA, 1*BNC, 1*HDMI
	Call Monitor	1*BNC
Audio	Input / Output	20 / 2
Record	Compression	H.264 Video, ADPCM Audio
	Frame rate (FPS) & Resolution	HD : 720p 120/100; 1080p 120/100 Full-D1: 360/300
	Watermark	Yes
	Mode	Manual / Schedule / Alarm / Motion / Panic
	Pre-record	0 ~ 10 seconds
	Post-record	0 ~ 60 minutes
Display	Resolution	HDMI/VGA: up to 1920*1080 NTSC : 720*480 PAL: 720*576
	Frame rate	Up to 30/25 FPS per display window
	Digital Zoom	X2, X4
Playback	Frame rate(FPS) & Resolution	HD : 720p 120/100; 1080p 60/50 Full-D1: 360 / 300
	Search	Smart search, Date/time, Camera, Alarm, Motion, Video Loss, Panic
Storage	SATA HDD	Up to 5 sets of SATA HDD's with Storage => 3TB HDD
	USB Ports	2
Alarm	Input / Output	16 / 2NO, 2NC
	Set / Unset	1 Contact or TTU / CMOS signal, polarity selectable
	Panic	
Network	Ethernet	RJ-45 10/100M / 1G bps
	Web	Windows 7, Vista XP, and 2000 Dual streaming live view
	E-mail / FTP	Yes
	Two-way Audio	Yes
	Remote users	8
	Remote stations	PC, mobile phone, PDA, etc
Control	RS-485	1, for PTZ / Keyboard / POS / GPS
	RS-232	1, for PTZ / Keyboard / POS / GPS
Setup	Local	I/R remote, USB mouse, RS-485 keyboard
	Remote	I.E / CMS
	Multi-lingual	Yes
Power	Source	+12VDC
	Consumption	100W Max. w/5 HDDs, 50W Max. w/2 HDDs
Dimension(WxDxH) / Weight		430*350*66mm / 4.0KG (w/o HDD)
Operating Temperature		0°C ~ + 45°C

Alternate Views



Front view



Rear view

System Configuration

